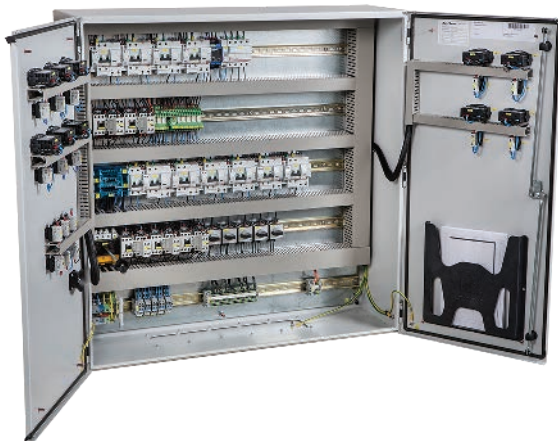


Control panel for pipe frost protection of sprinkler systems

DESCRIPTION



The Raychem SBS-XX-SNR control panel for pipe frost protection of sprinkler systems provides a totally integrated solution for the control of Raychem self-regulating heating cables for sprinkler applications. The control panel comprises multi-control and multi-sensor thermostatic control and redundant circuit automatic switching capability in order to be compliant with the requirements of BS EN 12845:2008. The SBS-xx-SNR panels can switch 2-12 circuits of frost protection heating cables with up to 12 control and sensor inputs (1 per "prime" circuit and redundant circuit). The panel also includes electrical circuit protection devices (C-type circuit breakers and RCD protection) for safety and peace of mind. The panels need only be connected to the 400Vac (3 phase) supply.

ADVANTAGES

Fast connection of multiple circuits directly into the control panel

- No need for additional connections or junction boxes
 - 2-12 maximum circuit lengths can be connected to 1 panel
 - Automatic redundant circuit switching as required by BS EN 12845:2008
 - Circuit protection and safety devices integrated into the panel
- No need for separate safety devices
 - Digital temperature feedback for each individual sprinkler line
 - Alarm function in case of heater failure (and automatic switch to redundant line)
 - Complete system from the manufacturer
- System and components specifically selected for high performance frost protection of sprinkler systems

TECHNICAL DATA

| | |
|------------------------|--|
| Control | 2 x Elreha Tarn 1170 Digital line sensing control per sprinkler line - Prime circuit - Redundant circuit (max. 12 controllers per panel) |
| Supply voltage | 400 Vac (3 Phase) |
| Heater circuit voltage | 230Vac 50/60Hz |
| Ambient temperatures | +10°C to +35°C |
| Sensor | Ambient sensor and line sensor per sprinkler line |
| Approval | CE (IEC61439) |
| Main switch | Dependent on selected panel (32A - 63A) |
| RCD | 300mA |
| Line Circuit breakers | 16A (Type C) per heating circuit. |
| Alarm function | 1 general potential free alarm contact; Alarm light indicator on panel front |
| Selector switch | Automatic Mode/ Manual Prime circuit on mode / Manual redundant circuit on mode |

PANEL DIMENSIONS

| Product | Weight (kg) | Length (mm) | Width (mm) | Depth (mm) |
|------------|-------------|-------------|------------|------------|
| SBS-02-SNR | 45 | 600 | 600 | 210 |
| SBS-04-SNR | 90 | 800 | 800 | 210 |
| SBS-06-SNR | 90 | 800 | 800 | 210 |
| SBS-08-SNR | 115 | 1000 | 800 | 300 |
| SBS-10-SNR | 140 | 1000 | 1000 | 300 |
| SBS-12-SNR | 140 | 1000 | 1000 | 300 |

RELATED PRODUCTS

The SBS-xx-SNR control panel is compatible with the Raychem pipe frost protection cables:

FS-A-2X - 150 metres per circuit

FS-B-2X - 105 metres per circuit

FS-C10-2X - 150 metres per circuit

(for 180m circuits, please contact Chemelex)

R-ETL-A - 100 meters per circuit

ORDER REFERENCE

| Product name | Order reference | Description |
|--------------|-----------------|---|
| SBS-02-SNR | 185780-000 | Multi circuit control panel for sprinkler systems (1 pipe) |
| SBS-04-SNR | 278362-000 | Multi circuit control panel for sprinkler systems (2 pipes) |
| SBS-06-SNR | 300074-000 | Multi circuit control panel for sprinkler systems (3 pipes) |
| SBS-08-SNR | 158834-000 | Multi circuit control panel for sprinkler systems (4 pipes) |
| SBS-10-SNR | 012276-000 | Multi circuit control panel for sprinkler systems (5 pipes) |
| SBS-12-SNR | 712998-000 | Multi circuit control panel for sprinkler systems (6 pipes) |

INSTALLATION INSTRUCTION

Complete panel wiring information and schematics are provided with the product. All electrical installations must be carried out by an approved electrician in compliance with local electrical requirements and norms.

Europe, Middle East, Africa, India

Tel +32 16 213 511

Fax +32 16 213 604

info@chemelex.com

chemelex
excellence is everything

Raychem Tracer Pyrotenax Nuheat