

## Advanced Heat Trace Monitoring & Management



Many facilities spend excessive hours on unnecessary heat trace assessments, wasting time and resources. SmartTrace enhances decision-making, boosts efficiency, and cuts costs, all while safe guarding your system and data. Stop relying on basic indications, such as SCADA Systems or Alarm Lights, to know the health of your heat trace system.



### Improve Your Line of Sight

SmartTrace's real-time visibility, advanced analytics, and automated reporting improve efficiency, reducing maintenance issues and optimizing system performance.



### Reduce Costs

With clear indicators and real-time data, you can focus your manpower where it needs to be, without wasting time and money on nuisance alarms and ineffective processes.



### Stay Secure

With end-to-end encryption, outboundonly communication, no open ports, and granular access controls, SmartTrace minimizes security risks.

## Trace Smarter, Not Harder

You need the right data to make good decisions.

SmartTrace is a monitoring and management solution that gives you better visibility, saves you money, and puts you in control of your infrastructure. Designed based on years of experience maintaining and managing heat tracing in live, operating facilities, SmartTrace provides the smart data you need to thrive.



### Meet ESG Targets

Reduce costs, lower power consumption, and minimize your CO<sub>2</sub> footprint to meet critical ESG goals.



### Reduce Maintenance Costs

Reduce time and field hours spent on alarm assessment and nuisance work.



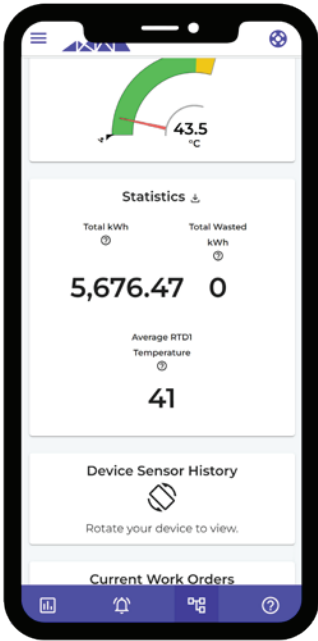
### Eliminate Pipe Bursts

Eliminate human error and access continuous remote monitoring of EHT on critical process equipment.



### Empower Your Teams

Focus on more productive tasks with the heat trace visibility needed for productivity.



## SOFTWARE FEATURES

- Live visibility & real-time monitoring from anywhere
- Instant health and status reporting across heat trace infrastructure
- Full-time automated EHT management
- Heat trace controller-agnostic platform
- No proprietary communication hardware required
- Power consumption and wasted power analytics
- Wireless and cellular connectivity options
- Advanced criticality-based alarm and rule sets
- Automated device trending
- Audit trails and complete change history
- Live automated programming review and configuration visibility
- Weather data integration
- Automated email, text, and phone notifications
- Integrated document control and system records
- Geo-tagging of field assets and controllers
- Digital field reporting and inspection tools
- Knowledge base access and advanced training resources

## TRUSTED BY THE BEST



North America, Latin America,  
Europe, Middle East, Africa, India

SmartTrace@chemelex.com



**Raychem Tracer Pyrotenax Nuheat**